

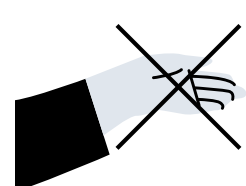


# Cambridge Central Mosque is Open for Ramadan!

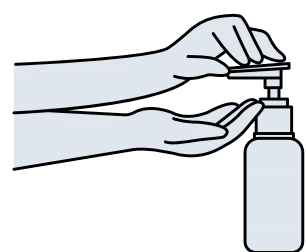
As Salaamu Alaykum!

We are so pleased to announce that our mosque will be open to local community members for Ramadan this year!  
This document will help guide you through Ramadan at Cambridge Central Mosque.

## Covid Safety Protocols



No handshakes & hugging, please use non-contact greeting methods.



Sanitise your hands upon entering and leaving the mosque.



Please bring your own prayer mat, shoe bag & face-covering.



Keep a 2m social distance from others at all times.



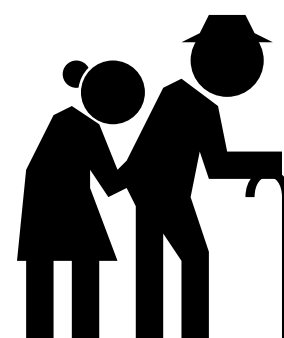
Please leave promptly after the prayer and pray your sunnah prayers at home.



Please perform wudhu at home as our washrooms will be closed.



Children under 9 will not be permitted inside the mosque.



Please pray at home if you are over 70 or vulnerable.



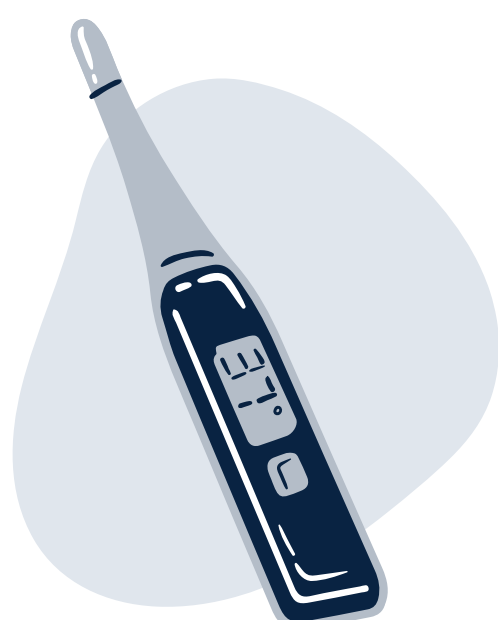
Ventilation will be increased throughout the mosque.



Pray at home if you are feeling unwell.

## You *must* stay at home if ....

- You have a high temperature.
- You have a new, continuous cough.
- You have a loss of, or change to, your sense of smell or taste.
- You have an unwell family member at home.



## This Guidance Includes

- General Mosque Guidance
- Iftar Guidance
- Tarawih Guidance



If you present any of these symptoms upon arrival, you will unfortunately not be permitted on site

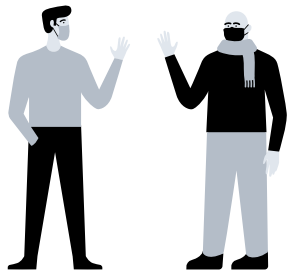
# General Mosque Guidance



Lectures/ talks will be lived streamed and will not take place at the mosque.



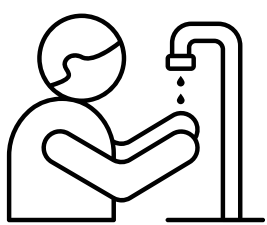
Please leave promptly after the prayer and pray your sunnah prayers at home.



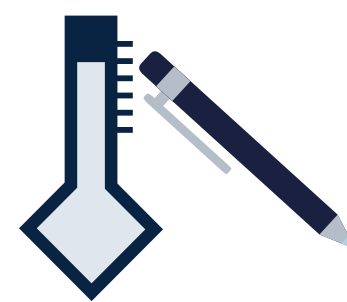
Keep a 2m social distance from others at all times.



Please bring your own prayer mat, shoe bag & face-covering.



Please perform wudhu at home as our washrooms will be closed.



Sign in & temperature check required upon entry.

## General Opening Times

The Mosque building will be open between 12:30 - 20:00\*

\*For any prayers outside generally opening times, the mosque will open 15 mins before and close 15 mins after Jama'at time.



The Islamic Garden will be open from 11:00 - 18:00.

## Friday Opening Times



The Mosque building will be open for Jum'a prayers from 12:45 and will close following the second Jum'a until 16:00. This is to allow a thorough clean of the premises.



The Islamic Garden will be open from 16:00 - 18:00 on Friday's.

## Jum'a Times

Please see the Mosque's website for information on how to book your place!

**1st Jum'a: 12:45 pm – 13:40 pm**

Arrival: 12:45 pm

Khutba: 13:15 pm

**2nd Jum'a: 14:00 pm – 14:40 pm**

Arrival: 14:00 pm

Khutba: 14:15 pm



# Iftar Guidance



Strictly no food or drink will be permitted onsite.

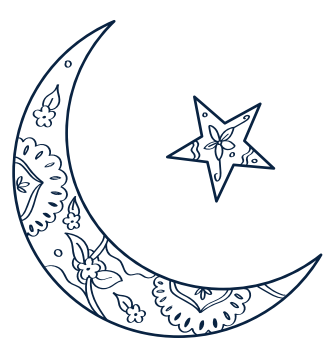


The mosque will provide worshippers water & dates to break fast.

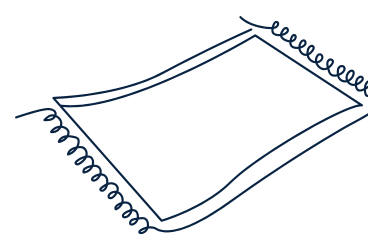


To prepare for Isha'a and Taraweeh prayers, we kindly request that worshippers leave the mosque after Maghrib Jama'at & read their sunnah's at home.

# Tarawih Guidance



Tarawih will begin straight after Isha'a Jammah (Please refer to the prayer timetable online).



Tarawih prayers will consist of 8 short Rakats.



Children under 9 will not be permitted inside the Mosque.



If travelling by car, please use the Mosque car park and if full, please park sensibly without causing any disruption to our neighbours.



There will be no Itikhaf in the mosque during Ramadan this year due to Covid-19.



Worshippers must book a ticket *daily* via Eventbrite to attend Isha'a Jammah and Tarawih prayer - due to limited availability we kindly request worshippers not to book 2 nights in a row.



To respect our neighbours, we kindly ask that you leave quietly after Tarawih prayers without congregating outside the mosque.



Please try to avoid travelling to the mosque by car if you live locally by using alternative methods such as walking, cycling or public transport i.e Bus.